

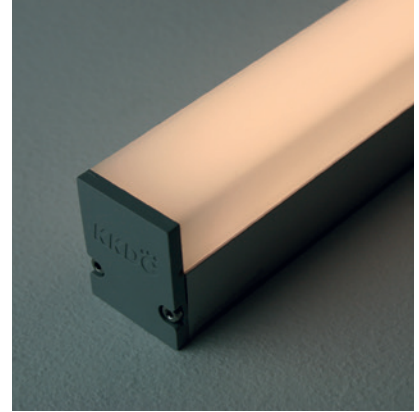
Linear

# LINI Glow XL RGBW Fixture Guide

# KKDÖ



Indoor | Surface | Output up to 689lm/m (210lm/ft)

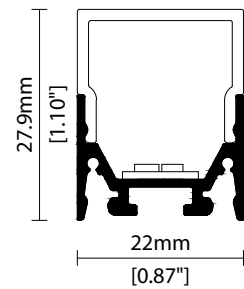


## Key applications

- ✓ Architectural detail
- ✓ Cabinet & furniture
- ✓ Direct lighting
- ✓ Interior
- ✓ Mirror back lighting
- ✓ Special effect

## Key features

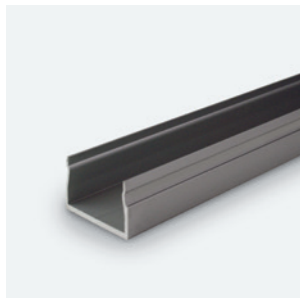
- ✓ Custom lengths
- ✓ Constant Voltage (CV)
- ✓ Continuous light runs
- ✓ Diffusion: homogenous
- ✓ Direct view
- ✓ Extensive CCT range
- ✓ IP40 dry area
- ✓ IP44 moisture resistant
- ✓ LEDmix RGBW



## MOUNTING METHODS



KKCP-11 Concealed clip



KKCR-01-1000 Cable raceway (1000mm)  
KKCR-01-2000 Cable raceway (2000mm)  
KKCR-01-3000 Cable raceway (3000mm)



KKJT-02 Joining bar

Linear

# LINI Glow XL RGBW

## Specification sheet



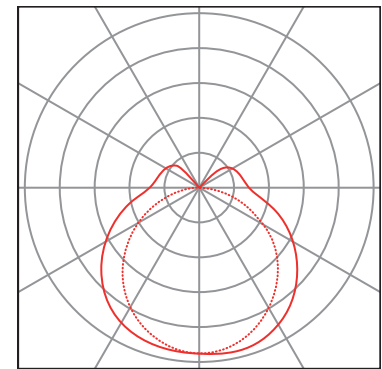
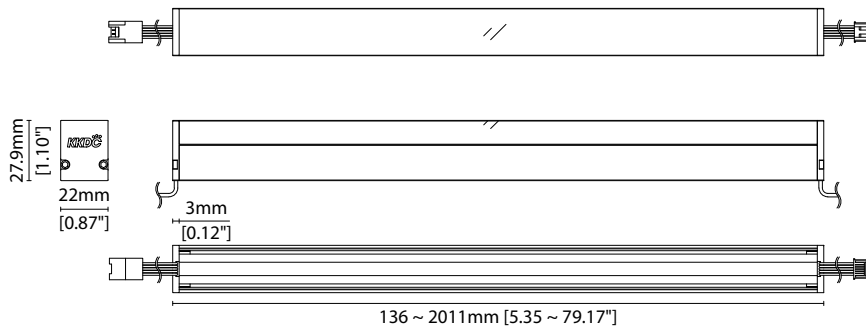
<b>Dimensions</b>	H28/W22/L136-2011mm (H1.1/W0.87/L5.35-79.17in)
<b>PCB Cut-point</b>	62.5mm increment/2000mm max (2.46in increment/78.74in max)
<b>LED Pitch</b>	10.4mm-192LED/m (0.41in - 59LED/ft)
<b>Chip</b>	RGBW LEDmix
<b>Cover/Optics</b>	Diffused (156°)
<b>CCT</b>	<b>s-line:</b> White: 1900K/2100K/2300K/2500K/2700K/3000K/3500K/4000K/5000K <b>RGB:</b> Red 620-625nm/Blue 455-460nm/Green 520-525nm <b>k-line:</b> White: 1900K/2100K/2300K/2500K/2700K/3000K/3500K/4000K/5000K <b>RGB:</b> Red 617-627nm/Blue 464-474nm/Green 515-525nm
<b>LED binning</b>	<b>s-line:</b> White: 2.5-step MacAdam ellipse / <b>RGB:</b> 5nm tolerance <b>k-line:</b> White: 3-step MacAdam ellipse / <b>RGB:</b> 10nm tolerance
<b>CRI</b>	≥ 90 (white only)
<b>Lifetime</b>	50,000 hours @ 25°C (50,000 hours @ 77°F)
<b>Operating temp</b>	T <sub>a</sub> = -25 to 50°C (T <sub>c</sub> max = 75°C) T <sub>a</sub> = -13 to 122°F (T <sub>c</sub> max = 167°F)
<b>IP Rating</b>	IP40/IP44
<b>Finish</b>	Silver anodised
<b>Mounting</b>	Surface mounting via concealed clips or cable raceway
<b>Power feed</b>	Hardwire tails or male/female connectors
<b>Control</b>	DMX/DALI



Power consumption	Supply voltage	Supply current
20W/m (6.10W/ft)	24V DC	0.83A/m (0.25A/ft)

### Diffused Cover

<b>s-line</b>	689lm/m (210lm/ft) 34.5lm/W
<b>k-line</b>	650lm/m (198lm/ft) 32.5lm/W



Diffused Cover  
— C0 / C180    cd / 1000 lm    - - - C90 / C270

Data derived from IESNA LM-79-08 accredited testing of production samples.

See KKDC website for product document updates.

[www.kkdc.lighting](http://www.kkdc.lighting)

LINIGlowXLRGBWS-03.04EN-20251105

Linear

# LINI Glow XL RGBW

## Code Table



### FIXTURE

Model	Finish	Cover	Grade <sup>1</sup>	LED	Colour (CCT)	Length Availability <sup>2</sup>	IP	Cable Length	Power Feed <sup>3</sup>	Input	
LINI Glow XL	GX Silver Anodised	SA Diffused U cover	0 s k	RGBW R201	RGB+1900K	19	m 136-2011mm 62.5mm increments	IP40 40	300mm/11.81" 0300	Single no sheath tail S00X	DC 24V g
					RGB+2100K	21					
					RGB+2300K	23	i 5.35-79.17in 2.46in increments	IP44 44	1000mm/39.37" 1000	Double no sheath tail D00X	
					RGB+2500K	25					
					RGB+2700K	27	(Specify length code OR total run length)			Single no sheath IP20 connector S20X	
					RGB+3000K	30					
					RGB+3500K	35					
					RGB+4000K	40					
					RGB+5000K	50					
									Double no sheath IP20 connector D20X		

<sup>1</sup> Refer to LED Grading Key on **Specification sheet** page

<sup>2</sup> Refer to **Length Availability List** or enter total run length instead of length code

<sup>3</sup> Refer to **Power Feed Options** on **Options** pages

<sup>4</sup> LEDmix RGBW requires white colour choice

### Code Example:

GX	-	SA	-	C	-	s	-	R201	-	35	-	m	511	-	40	-	0300	-	D00X	-	g
LINI Glow XL		Silver Anodised		Diffused				RGBW		RGB+3500K		511mm		IP40		300mm/11.81"		Double no sheath tail		DC 24V	

### ACCESSORIES

#### Mounting Accessories

KKCP-11	Concealed Clip
KKCR-01-1000	1000mm/39.37" Cable Raceway
KKCR-01-2000	2000mm/78.74" Cable Raceway
KKCR-01-3000	3000mm/118.11" Cable Raceway
KKJT-02	Joining Bar

#### Connection Accessories

KKCN-29	5 PIN RGBW male & female 50mm/1.97" pair
KKCN-30	5 PIN RGBW male & female 300mm/11.81" pair
KKCN-32	5 PIN RGBW 1000mm/39.37" extension lead

\* Refer to **Power feed** on **Accessories** pages

#### PSU/Driver

DALI/DMX

\* Refer to **Driver/PSU Options** page for details or provide requirement and KKDC to offer the suitable option

\* Refer to **Mounting accessories** on **Accessories** pages

### LED ENGINE VARIANTS (LED STRIP TYPE)

Colour	LED	Lumen/m	Lumen/ft	W/m	W/ft	Spec Doc	Length	Increment
Single CCT	R007	386	118	7	2.13	LINI GLOW XL R007	94-2011mm (3.70-79.17in)	41.7mm (1.64in)
	R014	801	244	14	4.27	LINI GLOW XL R014	94-2011mm (3.70-79.17in)	41.7mm (1.64in)
	R020	1145	349	20	6.10	LINI GLOW XL R020	94-2011mm (3.70-79.17in)	41.7mm (1.64in)
	A040	2680	817	40	12.19	LINI GLOW XL A040	88-1511mm (3.46-59.49in)	38.46mm (1.51in)
Warm Dim/Dynamic White	R207	899	274	16	4.88	LINI GLOW XL R207	94-2011mm (3.70-79.17in)	83.3mm (3.28in)
RGB	501	Red: 90	Red: 27	15.6	4.75	LINI GLOW XL RGB	94-2011mm (3.70-79.17in)	83.3mm (3.28in)
		Green: 193	Green: 59					
		Blue: 32	Blue: 10					
		RGB: 280	RGB: 85					
<b>RGBW</b>	<b>R201</b>	<b>689</b>	<b>210</b>	<b>20</b>	<b>6.10</b>	<b>LINI GLOW XL RGBW</b>	<b>136-2011mm (5.35-79.17in)</b>	<b>62.5mm (2.46in)</b>

\* Performance data: s-line, 3000K+RGB, diffused cover

# LINE Glow XL RGBW

## Length Availability List

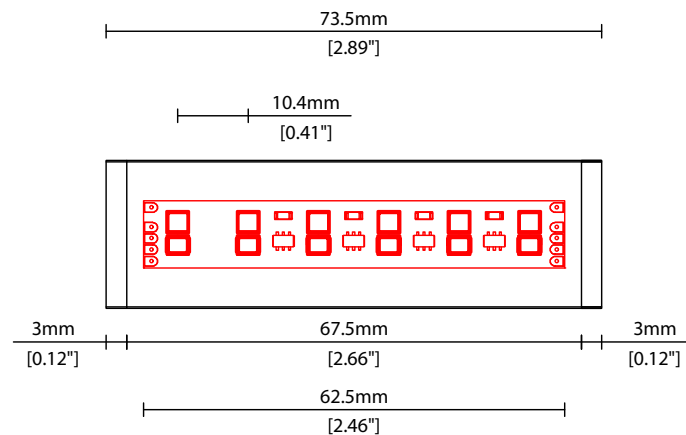


Length Code		Fixture Length <sup>1</sup>		LED Strip <sup>2</sup>		End Cap Dimension <sup>3</sup>		Wattage (W)	Output (lm)
Metric	Imperial(US)	Metric	Imperial(US)	Metric	Imperial(US)	Metric	Imperial(US)		3000K (Test Data)
m0136	i0005	136mm	5.35in	125mm	4.92in	6mm	0.24in	2.50	81
m0199	i0008	199mm	7.81in	188mm	7.38in	6mm	0.24in	3.75	122
m0261	i0010	261mm	10.28in	250mm	9.84in	6mm	0.24in	5.00	163
m0324	i0013	324mm	12.74in	313mm	12.30in	6mm	0.24in	6.25	203
m0386	i0015	386mm	15.20in	375mm	14.76in	6mm	0.24in	7.50	244
m0449	i0018	449mm	17.66in	438mm	17.22in	6mm	0.24in	8.75	284
m0511	i0020	511mm	20.12in	500mm	19.69in	6mm	0.24in	10.00	325
m0574	i0023	574mm	22.58in	563mm	22.15in	6mm	0.24in	11.25	366
m0636	i0025	636mm	25.04in	625mm	24.61in	6mm	0.24in	12.50	406
m0699	i0028	699mm	27.50in	688mm	27.07in	6mm	0.24in	13.75	447
m0761	i0030	761mm	29.96in	750mm	29.53in	6mm	0.24in	15.00	488
m0824	i0032	824mm	32.42in	813mm	31.99in	6mm	0.24in	16.25	528
m0886	i0035	886mm	34.88in	875mm	34.45in	6mm	0.24in	17.50	569
m0949	i0037	949mm	37.34in	938mm	36.91in	6mm	0.24in	18.75	609
m1011	i0040	1011mm	39.80in	1000mm	39.37in	6mm	0.24in	20.00	650
m1074	i0042	1074mm	42.26in	1063mm	41.83in	6mm	0.24in	21.25	691
m1136	i0045	1136mm	44.72in	1125mm	44.29in	6mm	0.24in	22.50	731
m1199	i0047	1199mm	47.19in	1188mm	46.75in	6mm	0.24in	23.75	772
m1261	i0050	1261mm	49.65in	1250mm	49.21in	6mm	0.24in	25.00	813
m1324	i0052	1324mm	52.11in	1313mm	51.67in	6mm	0.24in	26.25	853
m1386	i0055	1386mm	54.57in	1375mm	54.13in	6mm	0.24in	27.50	894
m1449	i0057	1449mm	57.03in	1438mm	56.59in	6mm	0.24in	28.75	934
m1511	i0059	1511mm	59.49in	1500mm	59.06in	6mm	0.24in	30.00	975
m1574	i0062	1574mm	61.95in	1563mm	61.52in	6mm	0.24in	31.25	1016
m1636	i0064	1636mm	64.41in	1625mm	63.98in	6mm	0.24in	32.50	1056
m1699	i0067	1699mm	66.87in	1688mm	66.44in	6mm	0.24in	33.75	1097
m1761	i0069	1761mm	69.33in	1750mm	68.90in	6mm	0.24in	35.00	1138
m1824	i0072	1824mm	71.79in	1813mm	71.36in	6mm	0.24in	36.25	1178
m1886	i0074	1886mm	74.25in	1875mm	73.82in	6mm	0.24in	37.50	1219
m1949	i0077	1949mm	76.71in	1938mm	76.28in	6mm	0.24in	38.75	1259
m2011	i0079	2011mm	79.17in	2000mm	78.74in	6mm	0.24in	40.00	1300

<sup>1</sup> Actual total overall length of light fixture (LED strip + end caps + void/wire hole)

<sup>2</sup> Actual length of PCB strip

<sup>3</sup> Actual length of 2x end caps



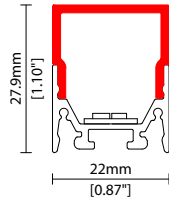
Linear

# LINI Glow XL RGBW Options

# KKDC

## COVER/LENS OPTIONS

\* Options are an integral part of the fixture ordering codes. Please refer to **Code Table** pages.

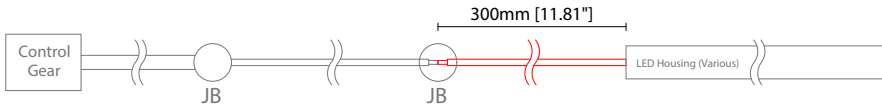


**0** Diffused U cover  
W22/H27.9mm (W0.87/H1.10")

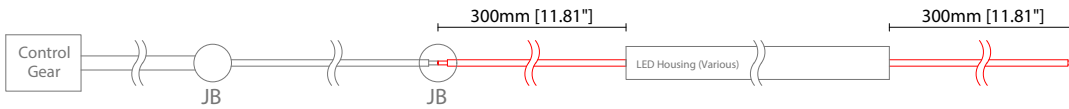
### POWER FEED OPTIONS

\* Options are an integral part of the fixture ordering codes. Please refer to **Code Table** pages.

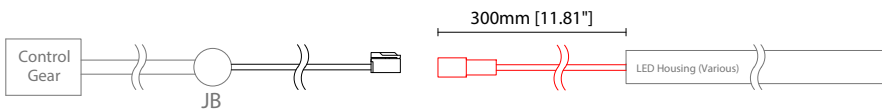
**0300 S00X 300mm (11.81") Single no sheath tail**



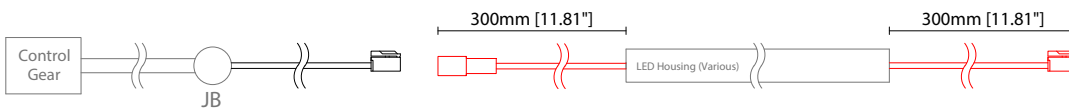
**0300 D00X 300mm (11.81") Double no sheath tail**



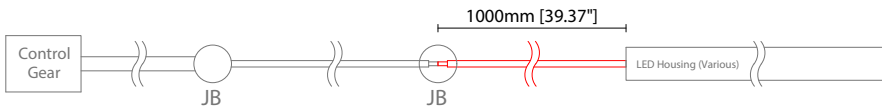
**0300 S20X 300mm (11.81") Single no sheath IP20 connector**



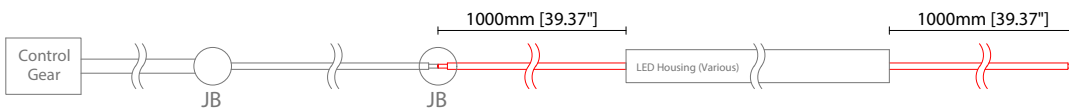
**0300 D20X 300mm (11.81") Double no sheath IP20 connector**



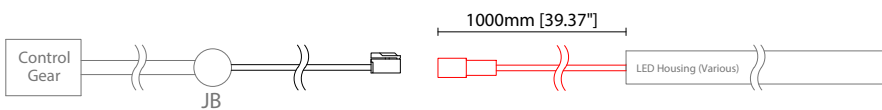
**1000 S00X 1000mm (39.37") Single no sheath tail**



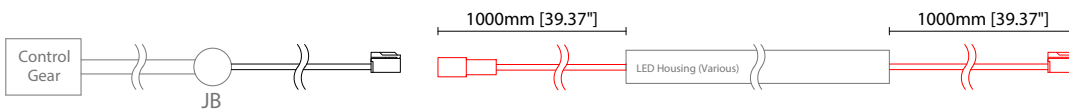
**1000 D00X 1000mm (39.37") Double no sheath tail**



**1000 S20X 1000mm (39.37") Single no sheath IP20 connector**



**1000 D20X 1000mm (39.37") Double no sheath IP20 connector**



#### Key

Control Gear Power supply, sub-controllers & control systems

JB Junction box / cable connection

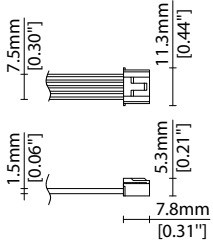
Linear

# LINI Glow XL RGBW Options

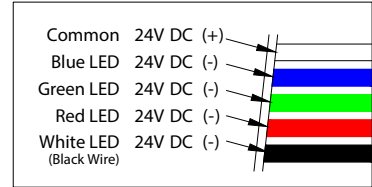
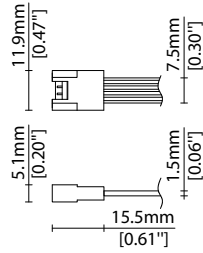


## POWER FEED OPTIONS (CONTINUED)

### 5 Pin RGBW Female Connector



### 5 Pin RGBW Male Connector

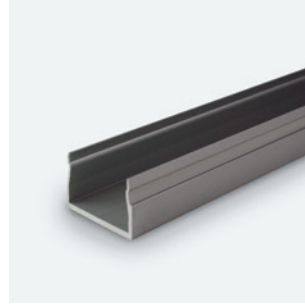
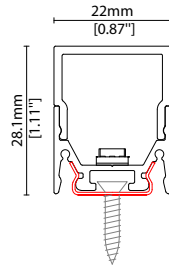


## MOUNTING ACCESSORIES

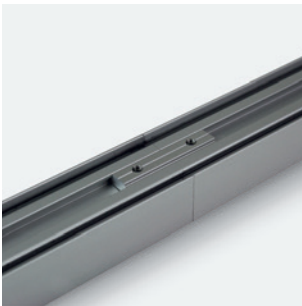
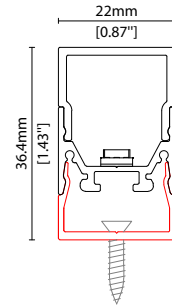
Note: Accessories are to be ordered separately with corresponding code shown below.



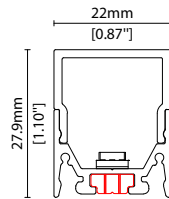
**KKCP-11**  
 Concealed clip  
 (allow 3 per metre/40in)  
 S/Steel finish  
 L20/W22/H28.1mm  
 (L0.79/W0.87/H1.11")



**KKCR-01-1000** 1000mm (39.37in)  
**KKCR-01-2000** 2000mm (78.74in)  
**KKCR-01-3000** 3000mm (118.11in)  
 Cable raceway\*  
 Anodised aluminium finish  
 W22/H36.4mm (W0.87/H1.43")  
 \* Cut & drilled to fit on site



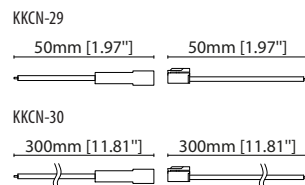
**KKJT-02**  
 Joining bar\* (allow 1 per join)  
 Anodised aluminium finish  
 L25mm (L0.98")  
 \* Mounting option required with  
 Joining bar



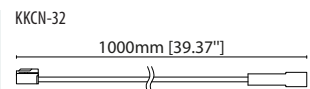
## POWER FEED



**KKCN-29** 50mm (1.97in) pair  
**KKCN-30** 300mm (11.81in) pair  
 5-PIN RGBW male + female  
 connector set



**KKCN-32** 1000mm (39.37in) pair  
 5-PIN RGBW male + female  
 extension lead



### KKDC CONTROL



IP20  
Plastic housing  
L170/W59/H29mm  
(L6.69/W2.32/H1.14in)

**KKDM-06** 1-10V  
visDIM dimmable sub-controller  
(4 x 8A max @ 12-36V)



IP20  
Plastic housing  
L170/W53.4/H28mm  
(L6.69/W2.10/H1.10in)

**KKSC-05** DMX  
visDIM dimmable sub-controller  
(4 x 5A max @ 12-36V)



IP20  
Plastic housing  
L170/W59/H29mm  
(L6.69/W2.32/H1.14in)

**KKDL-02** DALI  
visDIM dimmable sub-controller  
(4 x 8A max @ 12-36V)



IP20  
Plastic housing  
L166/W53.4/H23mm  
(L6.54/W2.10/H0.91in)

**KKDL-03** DALI  
visDIM dimmable sub-controller  
(4 x 5A max @ 12-36V)



IP20  
Plastic housing  
L170/W53.4/H28mm  
(L6.69/W2.10/H1.10in)

**KKDL-04** DALI-2  
visDIM dimmable sub-controller  
(4 x 5A max @ 12-36V)

### AVAILABLE PSU OPTIONS

Control Mode	PSU (Order Code)	Input Voltage AC	Output Voltage DC	Rated Output Current	Rated Power	Dim %	IP Rating
Switched	CEN-60-24	90-295V	24V	2.5A	60W	-	IP67
	HLG-60H-24	90-305V	24V	2.5A	60W	-	IP67
	HLG-100H-24	90-305V	24V	4.0A	100W	-	IP67
	HLG-150H-24	90-305V	24V	6.3A	150W	-	IP67
	HLG-240H-24	90-305V	24V	10A	240W	-	IP67
0-10V (1-10V)	PWM-40-24	90-305V	24V	1.67A	40W	100-0.15 (100-10)	IP67
	PWM-60-24	90-305V	24V	2.5A	60W	100-0.15 (100-10)	IP67
	PWM-90-24	90-305V	24V	3.67A	90W	100-0.15 (100-10)	IP67
	PWM-120-24	90-305V	24V	5.0A	120W	100-0.15 (100-10)	IP67
DALI	LIN100A1	120-277V	24V	1A per channel	100W	100-0.1	IP66/IP40
DMX RGB	LIN100A1	120-277V	24V	1.33A per channel	100W	100-0.1	IP66/IP40
DMX RGBW	LIN100A1	120-277A	24V	1A per channel	100W	100-0.1	IP66/IP40

### Flicker Free Options - Combination of PSU+ sub-controller

Control Mode	PSU (Order Code)	Sub-controller (Order Code)	Input Voltage AC	Output Voltage DC	Rated Output Current	Rated Power	Dim %	IP Rating PSU/ Sub-controller
0-10V or 1-10V	CEN-60-24	KKDM-06	90-295V	24V	2.5A	60W	100-0.9	IP67/IP20
	HLG-60H-24	KKDM-06	90-295V	24V	2.5A	60W	100-0.9	IP67/IP20
	HLG-100H-24	KKDM-06	90-295V	24V	4.0A	100W	100-0.9	IP67/IP20
	HLG-150H-24	KKDM-06	90-295V	24V	6.3A	150W	100-0.9	IP67/IP20
	HLG-240H-24	KKDM-06	90-295V	24V	10.0A	240W	100-0.9	IP67/IP20
DALI	CEN-60-24	KKDL-02/03/04/visDIM PRO 30	90-295V	24V	2.5A	60W	100-0.1	IP67/IP20
	HLG-60H-24	KKDL-02/03/04/visDIM PRO 30	90-305V	24V	2.5A	60W	100-0.1	IP67/IP20
	HLG-100H-24	KKDL-02/03/04/visDIM PRO 30	90-305V	24V	4.0A	100W	100-0.1	IP67/IP20
	HLG-150H-24	KKDL-02/03/04/visDIM PRO 30	90-305V	24V	6.3A	150W	100-0.1	IP67/IP20
	HLG-240H-24	KKDL-02/03/04/visDIM PRO 30	90-305V	24V	10.0A	240W	100-0.1	IP67/IP20
DMX RGB	CEN-60-24	KKSC-05	90-295V	24V	2.5A	60W	100-0.9	IP67/IP20
	HLG-60H-24	KKSC-05	90-305V	24V	2.5A	60W	100-0.9	IP67/IP20
	HLG-100H-24	KKSC-05	90-305V	24V	4A	100W	100-0.9	IP67/IP20
	HLG-150H-24	KKSC-05	90-305V	24V	6.3A	150W	100-0.9	IP67/IP20
	HLG-240H-24	KKSC-05	90-305V	24V	10.0A	240W	100-0.9	IP67/IP20

<sup>1</sup> The items shown above cover the most frequently used specification but does not exhaust the possible options

<sup>2</sup> PSU and/or driver can be chosen from the table, or KKDC may recommend the best option upon receipt of the controls requirement and installation environment

<sup>3</sup> Electrical shop drawing will include detailed information of PSU and relevant control drivers

<sup>4</sup> Cut sheets are available on the controls section of [www.kkdc.lighting](http://www.kkdc.lighting) or upon request